

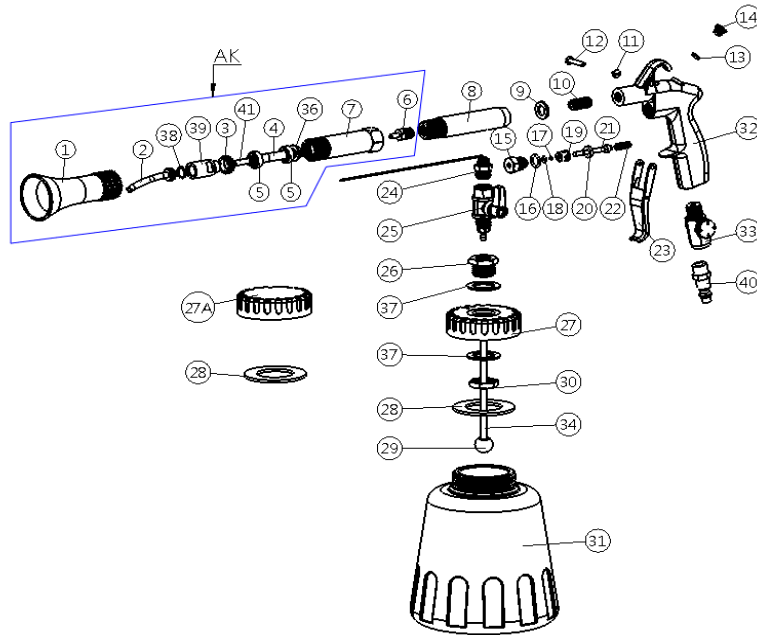


PROFESSIONAL TOOL



CYCLONE®

AZ020KV Cleaning Gun



Ref. No.	Part No.	Description	Q'ty /Tool	Ref. No.	Part No.	Description	Q'ty /Tool
1	SPAZ020K005	Plastic Nozzle	1	25	SPZ010017	Air Reverse Switch Ass'y	1
2	SPZ020007A	Aluminum Tube	1	26	SPZ010018	Screw	1
3	SPAZ020K006A	Nut For Bearing	1	27	SPZ010019	Cap (W/Hole)	1
4	SPAZ020K002A	Driver Shaft	1	27A	SPZ010019A	Cap (W/O Hole) (Option)	1
5	SPAZ2000A007A	Bearing 688ZZ (stainless)	2	28	SPZ020014	Gasket	2
6	SPAK020K004A	Screw	1	29	SPZ010032	Bushing	1
7	SPAZ020K001A	Bearing Housing	1	30	SPZ010021	Nut	1
8	SPZ020001	Hose	1	31	SPZ010023A	Cup(NEW)	1
9	SPZ010030	Gasket	1	32	SPZ010001A	Housing (Cartool+Cyclone)	1
10	SPZ010025	Screw	1	33	Z-033BA	Air Inlet (1/4"PF)	1
11	SPZ010008A	Screw	1		Z-033BA-PT	Air Inlet (1/4"PT)	
12	SPZ010007A	Pin	1		Z-033BA-NPT	Air Inlet (1/4"NPT)	
13	SPZ010028	O-Ring 4.47x1.78	1	34	SPZ010022	Tube Ass'y(incl.part.no.29)	1
14	SPZ010010	Screw	1	36	SPAZ020K008	Dust Plate (id8.0 od15.5 t1.5)	1
15	SPZ010011	Screw	1	37	SPZ010033	Washer (id 20 od 30 t1.5)	2
16	SPZ010026	O-Ring 9*2	1	38	SPZ020010	R-Ring (RTW-11)	1
17	SPZ010031	O-Ring 2x1	1	39	SPAZ020K009	Adapter	1
18	SPZ010027	O-Ring 3.5x1.5	1	40	CP-L14M	Nipple (EURO Type)	1
19	SPZ010012	Bushing	1		CP-M14M	Nipple (USA Type)	
20	SPZ010013	Gasket	1		CP-N14M	Nipple (ASIA Type)	
21	SPZ010014	Valve Stem	1	41	SPAZ020K010	Teflon Tube ID: 4*OD:5*L:57mm	1
22	SPZ010015A	Spring	1				
23	SPZ010009	Trigger	1				
24	SPZ020009A	Inner Tube Ass'y	1	AK	SPAZ020KVAK	Rotate Set	1SET

File No. :AZ020KV

V14031