

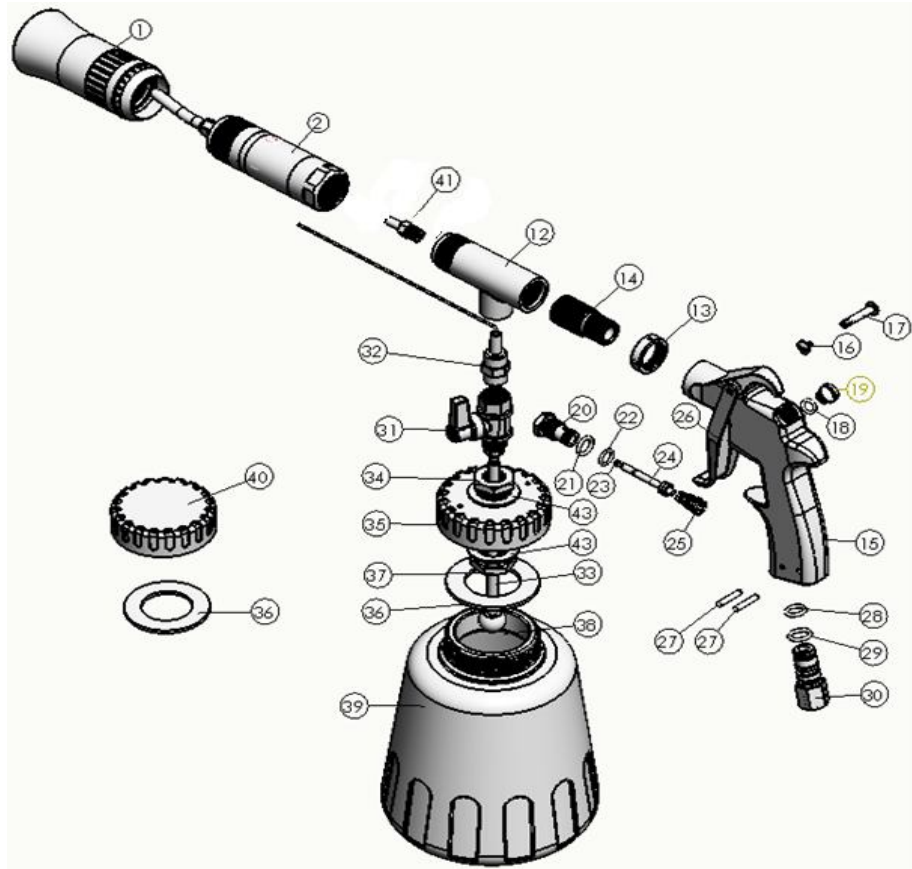


PROFESSIONAL TOOL



CYCLONE®

AZ2000A4N03 Turbo Cleaning Gun



Ref. No.	Part No.	Description	Q'ty /Tool	Ref. No.	Part No.	Description	Q'ty /Tool
1	SPAZ2000A0N001	Plastic Nozzle Ass'y (L:98mm)	1SET	28	SPAZ1000020	O-Ring P9 8.8*12.6*1.9	1
2	SPAZ2000A4N03	Rotate Set	1SET	29	SPAZ1000021	O-Ring P10 9.8*13.6*1.9	1
12	SPAZ2000A017A	Aluminum Hose	1	30	SPAZ1000022	Air Inlet PF1/4"-19	1
13	SPAZ1000015	Nut For Gun Body	1		SPAZ1000022A	Air Inlet NPT 1/4"-19	
14	SPAZ1000016	Screw For Gun Body	1		SPAZ1000022B	Air Inlet PT 1/4"-19	
15	SPAZ1000017	Gun Body (Cartool & Cyclone)	1	31	SPZ010017	Reverse Valve Ass'y	1SET
	SPAZ1000017A	Gun Body (W/O logo)	1	32	SPAZ2000A016K1	Inner Tube Ass'y (Teflon)	1
16	SPAZ1000024	Screw For Trigger	1	33	SPZ010022-1	PU Tube 4*6*145L	1
17	SPAZ1000026	Nut For Trigger	1	34	SPZ010018	Screw For Cap	1
18	SPAZ1000019	O-Ring 6*9*1.5	1	35	SPZ010019	Cap With 2 Hole	1
19	SPAZ1000018	Plug For Gun Body	1	36	SPZ020014	Gasket For Cap	2
20	SPAZ1000033	Valve	1	37	SPZ010021	Nut For Cap	1
21	SPAZ1000032	O-Ring 9*13*2	1	38	SPZ010032	Bushing	1
22	SPAZ1000031	O-Ring 7*2*11	1	39	SPZ010023A	Cup (New)	1
23	SPZ010031	O-Ring 2*4*1	1	40	SPZ010019A	Cap Without Hole	1
24	SPAZ1000028	Valve Stem	1	41	SPAZ2000A017-02A	Screw For Aluminum Hose	1
25	SPAZ1000027	Spring For Valve	1	43	SPZ010033	Washer (SUS 304)	2
26	SPAZ1000025	Trigger	1				
27	SPAZ1000023	Spring Pin 3*19	2				